

# SCIENTIFIC INFORMATION

## 1 . Oral presentation

All speakers are requested to give presentation by PC. Please bring your own PC.  
( You may use either Windows PC or Macintosh PC )

- You are not allowed to give presentation by slides or only by data.  
However, we strongly recommend to bring CD-R or USB memory to back up for PC troubles.
- PC should have display output interface with D-sub 15pin.  
If you have Macintosh PC, you might need a connector to attach to the projector. Please check beforehand.
- Please file your presentation data on the desktop. Your presentation data should be filed with your program number and your name. ( Sample: IO-1 Kato )

### 1 ) PC Preview & Check-in

Please come to the PC preview desk by 30 minutes before the session time with your PC. After your presentation, please pick up your PC from PC operator desk.

### 2 ) Allotted time for presentation

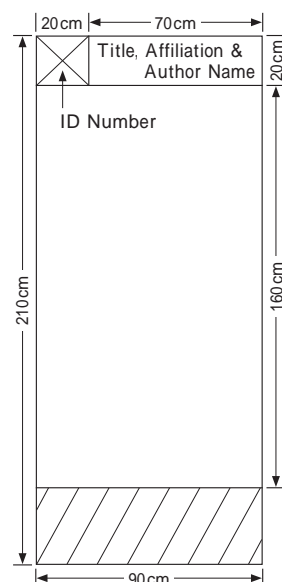
- Free papers for ICGC      6min. with 3min. discussion

## 2 . Instruction for Chairpersons

Please come to the PC preview desk by 15 minutes before the session time to inform your presence and stand by at the next chairperson's seat 10 minutes before the session.

## 3 . Poster presentation

- 1 ) Poster Set up:    Thursday, August 19    8 : 30-9 : 30  
Poster Discussion:   Thursday, August 19    16 : 30-17 : 30  
Poster Clean up:    Friday, August 20    14 : 00-15 : 00
- 2 ) Poster Dimensions: 90cm wide x 160cm height for your presentation. Authors are requested to prepare a title card including the name(s) and affiliation(s) of the author(s). The title card will be 70cm wide x 20cm height.
- 3 ) Poster discussion time will be scheduled for authors to be present at their posters for attendees to view and to discuss the work with the authors.
- 4 ) After poster clean up time, the displayed posters will be removed by Secretariat.



## Social Program

Get Together Party

August 19 ( Thu.) 19:30- 2nd Floor “ Empress Hall ”

## ISGC Business Meeting

August 20 ( Fri.) 7:30-8:30 2nd Floor “ Crystal Room A ”

## ACKNOWLEDGEMENTS

The Congress and Society wish to express their gratitude to all collaborators at this meetings. Particularly, the participation and contribution of the following companies are much appreciated and gratefully acknowledged.

### Contributors

The Federation of Pharmaceutical Manufacturer ' s Association of Japan

Osaka Pharmaceutical Manufacturers Association

Hiroshima Cancer Seminar

Sankyo Foundation of Life Science

Uehara Memorial Foundation

### Symposia

Chugai Pharmaceutical Co., Ltd.

Sankyo Co., Ltd.

Otsuka Pharmaceutical Co., Ltd.

Taiho Pharmaceutical Co., Ltd.

### Luncheon Seminar

Bristol-Myers Squibb Co.

(as of July 10)

## ACCESS TO THE MEETING VENUE

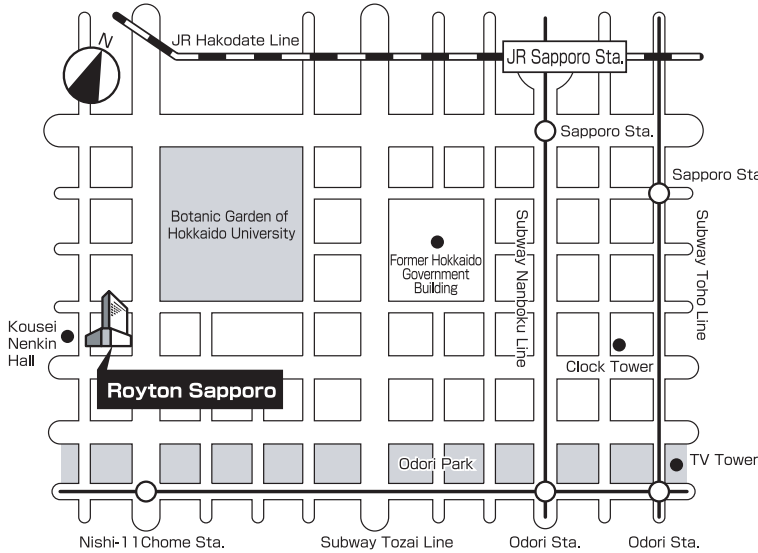
From New Chitose Airport to Royton Sapporo

Limousine bus: 70-90 minutes from New Chitose Airport to Royton Sapporo.

Train/taxi: 40 minutes by JR (Japan Railway) Airport Express from New Chitose Airport Station to JR Sapporo Station. 5 minutes by taxi.

Train/subway: 40 minutes by JR (Japan Railway) Airport Express from New Chitose Airport Station to JR Sapporo Station. Take the Nanboku line to Odori Station and change to the Tozai line.

Travel to Nishi-11 chome station (15 minutes). Royton Sapporo is 3 minutes walk from Nishi-11 chome Station.



Venue:

Royton Sapporo,  
Kita-1 Nishi-11, Chuo-ku, Sapporo,  
Hokkaido, 060-0001 Japan

Phone: +81-11-271-2711

Fax: +81-11-207-3344

OFFICIAL TRAVEL AGENT

JTB Corp. International Travel Div.

(ICGC '04 Desk)

2-3-11 Higashi-Shinagawa

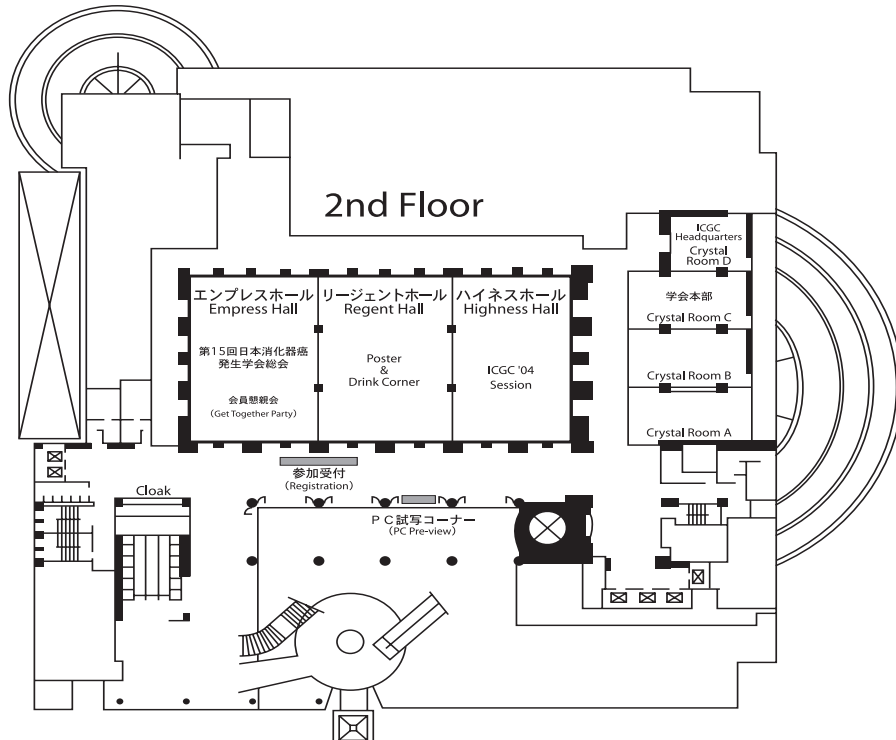
Shinagawa-ku, Tokyo 140-8604 Japan

Phone: +81-3-5796-5445

Fax: +81-3-5495-0685

E-mail: icgc2004@itd.jtb.co.jp

## FLOOR PLAN



# PROGRAM AT A GLANCE ( Aug.19 )

	Empress Hall	Regent Hall	Highness Hall
8:25	15th JSGC Program		
8:30	<p>8:30-10:40</p> <p style="text-align: center;">Symposium 1 “ Clinical Applications of Knowledge on Genome Research ”</p> <p style="text-align: center;">Chairs: S. Takenoshita H. Yokozaki</p> <hr/> <p>11:00-12:00</p> <p style="text-align: center;">President Lecture K. Imai Chair: T. Ohara</p> <hr/> <p>12:00-13:00</p> <p style="text-align: center;">Luncheon Seminar 1 K. Hirakawa Chair: K. Sugimachi *Sponsored by Takeda Chemical Industries</p> <hr/> <p>13:00-13:35 Workshop 1 Precancerous lesions in digestive organs Chairs: M. Tatematsu, S. Shimada</p> <hr/> <p>13:35-14:17 Workshop 2 Gene analyses in digestive organ cancers Chairs: T. Minamoto, Y. Hinoda</p> <hr/> <p>14:17-14:59 Workshop 3 Epigenetic changes in digestive organ cancers Chairs: H. Kuwano, M. Toyota</p> <hr/> <p>14:59-15:34 Workshop 4 Esophageal cancer Chairs: T. Aikoh, Y. Maehara</p> <hr/> <p>15:34-16:23 Workshop 5 Gastric cancer Chairs: K. Miwa, M. Sunagawa</p> <hr/> <p>19:30-</p> <p style="text-align: center;">Get Together Party</p>	<p>8:30-9:30</p> <p style="text-align: center;">Poster Set</p> <hr/> <p>9:30-17:30</p> <p style="text-align: center;">Poster Viewing</p> <hr/> <p>16:30-17:30</p> <p style="text-align: center;">Poster Discussion Time</p>	<p style="text-align: center;">Opening Remarks</p> <hr/> <p>8:30-9:30 Free papers 1 “ Cancer Therapy and Chemoprevention ” Chairs: N. Arber, S. Ota</p> <hr/> <p>9:30-10:30 Free papers 2 “ Carcinogenesis and Cell Differentiation ” Chairs: J. R. Goldenring, F. Konishi</p> <hr/> <p>10:30-12:00</p> <p style="text-align: center;">Symposium 2 “ Cancer Invasion and Metastasis ” Chairs: C. Wittekind, M. Monden  *Sponsored by Taiho Pharma.</p> <hr/> <p>12:00-13:00 Luncheon Seminar Speaker: O. Hino B. Carr Chair: A. Terano *Sponsored by Bristol Myers</p> <hr/> <p>13:00-13:45 President Lecture “ Diversity of Gastric Carcinogenesis ” Chair: H. G. Beger</p> <hr/> <p>13:45-14:30 Special Lecture Speaker: B. Levin Chair: E. Tahara</p> <hr/> <p>14:30-16:30</p> <p style="text-align: center;">Symposium 1 “ Cancer Chemoprevention ” Chairs: R. Lotan, M. Omata  *Sponsored by Sankyo</p> <hr/> <p>17:30-19:30</p> <p style="text-align: center;">Evening Symposium “ Gastric Mucosal Cell Lineage and Gastric Cancer ” Chairs: T. Hattori, K. Sugano  *Sponsored by Otsuka Pharma.</p>

# PROGRAM AT A GLANCE ( Aug.20 )

	Empress Hall	Regent Hall	Highness Hall
7:30			7:30-8:30 ISGC Business Meeting [ Crystal Room A ]
8:30	15th JSGC Program		
	<div style="border: 1px solid black; padding: 5px; margin-bottom: 5px;">                     9:00-10:50                       Symposium 2                      “ New Advances in Treatment for Digestive Organ Cancers ”                      Chairs: M. Mori, W. Yasui                 </div> <div style="border: 1px solid black; padding: 5px; margin-bottom: 5px;">                     11:00-12:00                       Special Lecture                      Jean-Pierre Issa                      Chair: K. Imai                 </div> <div style="border: 1px solid black; padding: 5px; margin-bottom: 5px;">                     12:00-13:00                      Luncheon Seminar 2                      M. Mai                      Chair: E. Tahara                      *Sponsored by Kirin Brewery Co.                 </div> <div style="border: 1px solid black; padding: 5px; margin-bottom: 5px;">                     13:00-13:30                      Annual Meeting                 </div> <div style="border: 1px solid black; padding: 5px; margin-bottom: 5px;">                     13:30-14:19 Workshop 6                      Colon cancer                      Chairs: N. Tanaka, T. Fijimori                 </div> <div style="border: 1px solid black; padding: 5px; margin-bottom: 5px;">                     14:19-15:01 Workshop 7                      Cancers of liver, gall bladder and pancreas                      Chairs: K. Hirakawa, M. Oka                 </div> <div style="border: 1px solid black; padding: 5px; margin-bottom: 5px;">                     15:01-15:43 Workshop 8                      Metastases from digestive organ cancers                      Chairs: M. Tatsuta, N. Matsuura                 </div>	<div style="border: 1px solid black; padding: 5px; margin-bottom: 5px;">                     9:00-14:00                       Poster Viewing                 </div> <div style="border: 1px solid black; padding: 5px;">                     14:00-15:00                       Poster Clean up                 </div>	<div style="border: 1px solid black; padding: 5px; margin-bottom: 5px;">                     9:00-11:00                       Symposium 3                      “ Inflammation and Carcinogenesis ”                      Chairs: B.I. Carr, K. Hirata                       *Sponsored by Chugai Pharma.                 </div> <div style="border: 1px solid black; padding: 5px; margin-bottom: 5px;">                     11:00-11:45 Invited Lecture                      Speaker: C.C. Harris                      Chair: K. Sugimachi                 </div> <div style="border: 1px solid black; padding: 5px; margin-bottom: 5px;">                     13:30-14:40 Free papers 3                      “ Diagnosis &amp; Prognostic Factor ”                      Chairs: R. Riddell, Y. Maehara                 </div> <div style="border: 1px solid black; padding: 5px; margin-bottom: 5px;">                     14:40-15:40 Free papers 4                      “ Molecular Study ”                      Chairs: H. Nakagawa, H. Itoh                 </div> <div style="border: 1px solid black; padding: 5px;">                     Closing Remarks                 </div>



## Program

August 19 Thursday Meeting Room “ Highness Hall ”

- 8 : 25-8 : 30      **Opening Remarks**  
M. Kaminishi
- 8 : 30-9 : 30      **Free papers 1 “ Cancer therapy and Chemoprevention ”**  
Chairpersons: N. Arber (Tel-Aviv Medical Center, Tel-Aviv, Israel)  
S. Ota (Saitama Medical School, Saitama, Japan)
- IO-1      Prediction for the secondary carcinogenesis in the remnant stomach after gastrectomy using molecular biomarkers  
S. Kato, N. Matsukura, N. Matsuda, I. Fujita, T. Okuda, T. Mizutani, T. Kiyama, M. Miyashita, Z. Naito\*, T. Tajiri (Surgery for Organ Function and Biological Regulation, and Integrative Pathology\*, Nippon Medical School)
- IO-2      Induction of apoptosis by anti-Fas monoclonal antibody (mAb) without hepatotoxicity in human gastric carcinoma (GC) and colon carcinoma (CC) cells, and the enhancement of the induction of apoptosis by cycloheximide (CXM)  
K. Maruno, H. Abe, E. Tsuji, N. Miyajima, S. Sakai, N. Murata (Dept. of Surgery, Teikyo Univ. Hospital at Mizonokuchi )
- IO-3      Promotion of angiogenesis may play a role in the pro-tumorigenic activity of COX-2 during growth of gastrointestinal polyps  
H. Bamba<sup>1</sup>, S. Ota<sup>2</sup>, S. Arai<sup>2</sup>, Y. Imai<sup>2</sup>, S. Ban<sup>3</sup>, C. Kawamoto<sup>1</sup>, M. Shimizu<sup>3</sup>, K. Fujiwara<sup>2</sup>  
(<sup>1</sup>1st Dept. of Internal Med., Saitama Medical Center, Saitama Medical School, <sup>2</sup>Dept. of Gastroenterology and Hepatology, Saitama Medical School, <sup>3</sup>Dept. of pathology, Saitama Medical School)
- IO-4      The clinically used angiotensin-I converting enzyme (ACE) inhibitor, perindopril, may be utilized as a chemopreventive agent against hepatocellular carcinoma  
H. Yoshiji<sup>1</sup>, S. Kuriyama<sup>2</sup>, J. Yoshii<sup>1</sup>, Y. Ikenaka<sup>1</sup>, R. Noguchi<sup>1</sup>, K. Yanase<sup>1</sup>, T. Namisaki<sup>1</sup>, M. Kitade<sup>1</sup>, H. Fukui<sup>1</sup> (<sup>1</sup>Third Dept. of Internal Med., Nara Medical Univ., <sup>2</sup>Third Dept. of Internal Med., Kagawa Univ.)
- IO-5      Is COX-2 inhibition promising against hepatocellular carcinoma?  
H. Yamamoto, M. Kondo, M. Monden (Dept. of Surgery and Clinical Oncology, Osaka Univ.)
- IO-6      Influence of COX-2 inhibitor on pancreatic cancer invasion and metastasis  
S. Nakamori, J. Okami, S. Nakahira, A. Miyamoto, S. Marubashi, H. Nagano, K. Dono, K. Umeshita, M. Sakon, M. Monden (Dept. of Surgery and Clinical Oncology, Osaka Univ.)
- 9 : 30-10 : 30      **Free papers 2 “ Carcinogenesis and Cell Differentiation ”**  
Chairpersons: J. Goldenring (Vanderbilt Univ., School of Med., Nashville, USA)  
F. Konishi (Jichi Medical School, Tochigi, Japan)

- IO-7 Oral and esophageal epithelial stem cells present unique features distinct from other tissues  
H. Nakagawa<sup>1,2,3</sup>, K. Oyama<sup>1,2,3</sup>, H. Harada<sup>1,2,3</sup>, C. Andl<sup>1,2,3</sup>, M. Takaoka<sup>1,2,3</sup>, D. Baldwin<sup>5</sup>,  
R. J. Morris<sup>6</sup>, A. K. Rustgi<sup>1,2,3,4</sup> (<sup>1</sup>Gastroenterology Div., <sup>2</sup>Dept.s of Med., <sup>3</sup>Abramson Cancer  
Center, <sup>4</sup>Dept. of Genetics, <sup>5</sup>Microarray Core Facility, Dept. of Pathology and Laboratory Med.,  
Univ. of Pennsylvania, <sup>6</sup>Dept. of Dermatology, Columbia Univ. College of Physicians and Surgeons)
- IO-8 Over-expression of TGF-alpha in MT-TGF-alpha mice and Menetrier's disease patients  
elicits ectopic expression of Pdx1 in the gastric fundus  
S. Nomura, C. Leys, A. L. Means, S. H. Settle, R. M. Peek, Jr., S. D. Leach, C. V. Wright,  
R. J. Coffey, J. R. Goldenring (Vanderbilt Univ.)
- IO-9 Hypermethylation-associated inactivation of the SOCS-1 gene, a JAK/STAT inhibitor, in  
human pancreatic cancers  
T. Komazaki, H. Bo, M. Yoshino, M. Watanabe, A. Tokunaga (Institute of Gastroenterology,  
Nippon Medical School)
- IO-10 Increased mobilization of bone marrow derived endothelial progenitor cells in the  
peripheral blood with colon cancer progression  
B. Guleng, K. Tateishi, M. Ohta, H. Ijichi, J. Amarsanaa, T. Imamura, J. Imamura, Y. Tanaka,  
T. Ikenoue, T. Kawakami, F. Kanai, T. Kawabe, M. Omata (Dept. of Gastroenterology, Univ.  
of Tokyo)
- IO-11 Molecular diagnosis of ulcerative colitis associated cancer  
N. Matsubara, K. Ozaki, H. Isozaki, N. Tanaka (Dept. of Gastroenterological Surgery,  
Okayama Univ.)
- IO-12 Chronological trend of incidence of adenoma and carcinoma of the large bowel in Japan  
during these 30 years  
K. Kanazawa<sup>1</sup>, H. Shimada<sup>2</sup>, Y. Esaki<sup>2</sup>, M. Sawabe<sup>2</sup>, T. Arai<sup>2</sup> (<sup>1</sup>Dept. of Surgery, Jichi  
Medical School, <sup>2</sup>Dept. of Pathology, Tokyo Metropolitan Geriatric Hospital)
- 10:30-12:00 **Symposium 2 " Cancer Invasion and Metastasis "**  
Chairpersons: C. Wittekind (University of Leipzig, Leipzig, Germany)  
M. Monden (Osaka University, Osaka, Japan)  
\*Sponsored by Taiho Pharmaceutical Co., Ltd.
- IS2-1 Cancer invasion and metastasis  
C. Wittekind (University of Leipzig, Leipzig, Germany)
- IS2-2 Molecular bases of ischemia-accelerated tumor invasion and metastasis  
H. Esumi, A. Suzuki, G. Kusakai, J. Lu, T. Ogura (National Cancer Center Research Institute  
East, Kashiwa, Japan)
- IS2-3 Molecular analysis of invasion and metastasis in clinical cancer with cDNA microarray  
M. Mori (Kyushu University, Beppu, Japan)



- IS2-4 Search for novel genes involved in invasion and metastasis of gastric cancer through serial analysis of gene expression  
W. Yasui, N. Oue, Y. Mitani, P. P. Aung, H. Nakayama (Hiroshima University, Hiroshima, Japan)
- 12:00-13:00 **Luncheon Seminar**  
Chairperson: A. Terano (Dokky University School of Medicine, Tochigi, Japan)
- LS1 Intentional delay of cancer  
O. Hino (Juntendo University School of Medicine, the Cancer Institute, Tokyo, Japan)
- LS2 Hepatic arterial 90-Yttrium microspheres (Therasphere) for unresectable HCC  
B. I. Carr (University of Pittsburgh, Pittsburgh, USA)  
\*Sponsored by Bristol-Myers Squibb Co.
- 13:00-13:45 **President Lecture**  
Chairperson: H.G. Beger (Ulm University, Ulm, Germany)
- PL Diversity of gastric carcinogenesis  
M. Kaminishi (University of Tokyo, Tokyo, Japan)
- 13:45-14:30 **Special Lecture**  
Chairperson: E. Tahara (RERF, Hiroshima, Japan)
- SL Detouring or delaying colorectal carcinogenesis by chemoprevention  
B. Levin (MD Anderson Cancer Center, Houston, USA / president elect)
- 14:30-16:30 **Symposium 1 “ Cancer Chemoprevention ”**  
Chairpersons: R. Lotan (MD Anderson Cancer Center, Houston, USA)  
M. Omata (University of Tokyo, Tokyo, Japan)  
\*Sponsored by Sankyo Co., Ltd.
- IS1-1 Targeting apoptosis pathways by cancer chemopreventive agents  
R. Lotan (MD Anderson Cancer Center, Houston, USA)
- IS1-2 Mechanisms for prevention of gastrointestinal cancer  
R. N. DuBois (Vanderbilt University, Nashville, USA)
- IS1-3 Clinical trials of COX-2 inhibitors in cancer  
E. Hawk, A. Umar, J. L. Viner (NCI/DCP/GI Cancers Research Group, Bethesda, USA)
- IS1-4 Chemoprevention of colorectal cancer; the role of COX 2 inhibitors, from the bench to the bed-side  
N. Arber (Tel-Aviv Medical Center and Tel Aviv University, Tel-Aviv, Israel)

IS1-5 Cancer prevention by phytochemicals

H. Nishino (Kyoto Prefectural University of Medicine, Kyoto, Japan)

17:30-19:30 Evening Symposium “ Gastric Mucosal Cell Lineage and Gastric Cancer ”

Chairpersons: T. Hattori (Shiga Univ. of Medical Science, Ohtsu, Japan)

K. Sugano (Jichi Medical School, Tochigi, Japan)

\*Sponsored by Otsuka Pharmaceutical Co., Ltd.

EV-1 The TFF2/MUC6-secreting cell lineage in mucous transformation of the human gastric mucosa: pseudopyloric metaplasia (PPM), the ulcer-associated cell lineage (UACL), aberrant spasmolytic peptide expressing metaplasia (SPEM) and the response to gastric mucosal damage and neoplasia

N. Wright (Barts and the London, Queen Mary ̈, School of Medicine and Dentistry, London, UK)

EV-2 Identification of biomarkers for gastric pre-neoplasia using gene microarray and proteomic analysis of laser capture microdissected lineages

J. R. Goldenring, S. Nomura, C. Leys, E. Montgomery, J. R. Lee, T. C. Wang (Vanderbilt Univ. School of Med. and the Nashville VAMC, Univ. of Tokyo, Augusta VAMC and the Institute of Molecular Med., Medical College of Georgia, USA)

EV-3 Survivin is essential for gastric cancer growth and is a major target for therapeutic interventions

A. Tarnawski<sup>1,2</sup>, R. Pai<sup>1,2</sup>, S-K Chiou<sup>1,2</sup>, J. Chai<sup>1,2</sup> (<sup>1</sup>V A Long Beach Healthcare System, <sup>2</sup>Univ. of California, Irvine, USA)

EV-4 Gastric mucosal cell lineage and gastric cancer

M. Tatematsu, T. Tsukamoto, T. Mizoshita (Aichi Cancer Center Research Institute, Nagoya, Japan)

EV-5 Development of gastric carcinoma from intestinal metaplasia in Cdx2-transgenic mice

H. Mutoh<sup>1</sup>, S. Sakurai <sup>2</sup>, K. Satoh<sup>1</sup>, K. Sugano<sup>1</sup> (<sup>1</sup>Dept. of Gastroenterology, <sup>2</sup>Dept. of Pathology, Jichi Medical School, Tochigi, Japan)

19:30- Get Together Party [Room: Empress Hall (2<sup>nd</sup> fl.)]

August 19 Thursday Meeting Room “ Regent Hall ”

Poster Session

Poster Discussion Time Aug. 19 16:30-17:30

Poster Viewing Aug. 19 9:30-17:30 & Aug. 20 9:00-14:00

Poster Set Aug. 19 8:30-9:30 Poster Clean up Aug. 20 14:00-15:00

- IP-1 Expression of receptor for advanced glycation end products (RAGE) is associated with recurrence of human oral squamous cell carcinoma  
T. Sasahira, T. Sasaki, H. Kuniyasu (Dept. of Molecular Pathology, Nara Medical Univ.)
- IP-2 Expression of cyclooxygenase (COX)-2 and receptor for advanced glycation end products (RAGE) during rat tongue carcinogenesis by 4-nitroquinoline 1-oxide (4-NQO) and an effect of a selective COX-2 inhibitor, etodolac  
K. Yamamoto<sup>1</sup>, W. Kitayama<sup>1</sup>, A. Denda<sup>2</sup>, T. Sasahira<sup>1,2</sup>, H. Kuniyasu<sup>2</sup>, T. Kirita<sup>1</sup>  
(<sup>1</sup>) Dept. of Oral and Maxillofacial Surgery, Nara Medical Univ. <sup>2</sup>)Dept. of Molecular Pathology, Nara Medical Univ.)
- IP-3 Over-expression of angiogenesis markers in esophageal cancer  
M. Miyashita<sup>1</sup>, M. Katsuta<sup>1</sup>, H. Makino<sup>1</sup>, T. Nomura<sup>1</sup>, K. Matsumoto<sup>3</sup>, Z. Naito<sup>2</sup>,  
K. Yamashita<sup>1</sup>, T. Tajiri<sup>1</sup> (Dept. of Surgery I<sup>1</sup>, Pathology II<sup>2</sup>, Pathology of 2nd Hospital<sup>3</sup>, Nippon Medical School)
- IP-4 cDNA microarray analysis and p53 immunohistochemical analysis in esophageal superficial carcinomas  
H. Makino<sup>1,2</sup>, M. Miyashita, T. Nomura, M. Katsuta, M. Kashiwabara, K. Takahashi, T. Tajiri, K. Yamashita, K. Sasajima, R. Futami<sup>1</sup>, E. Gabrielson<sup>2</sup> (Dept. of Surgery I, Nippon Medical School<sup>1</sup>, Dept. of Pathology, Johns Hopkins Univ., School of Med., Baltimore<sup>2</sup>)
- IP-5 Exploring of the genes related to cellular immortalization and clinicopathological features in esophageal cancer  
T. Noguchi<sup>1</sup>, K. Hiyama<sup>1</sup>, K. Tanimoto<sup>1</sup>, T. Kan<sup>3</sup>, Y. Shimada<sup>3</sup>, M. Imamura<sup>3</sup>, E. Hiyama<sup>4</sup>,  
T. Noguchi<sup>2</sup>, K. Kawahara<sup>2</sup>, M. Nishiyama<sup>1</sup> (<sup>1</sup>)Dept. of Translational Cancer Research, Research Institute for Radiation Biology and Med., Hiroshima Univ., <sup>2</sup>2nd Dept. of Surgery, Faculty of Med., Oita Univ., <sup>3</sup>Dept. of Surgery and Surgical Basic Science, Kyoto Univ., <sup>4</sup>Natural Science Center for Basic Research and Development, Hiroshima Univ.)
- IP-6 A model of Barrett 's esophagus and gut regenerative cell lineage (GRCL) carcinogenesis  
K. Mukaisho<sup>1</sup>, K. Miwa <sup>2</sup>, T. Hattori<sup>1</sup> (<sup>1</sup>)Dept. of Pathology, Shiga Univ. of Medical Science, <sup>2</sup>)Dept. of Gastroenterologic Surgery, Kanazawa Univ.)
- IP-7 E-cadherin expression in esophageal squamous cell carcinoma for heavy smoker patients  
M. Futatsugi, N. Ueda, K. Mashino, E. Tokunaga, E. Oki, M. Yamamoto, S. Ushiro, M. Ikebe, S. Oda, Y. Kakeji, H. Baba, Y. Maehara (Dept. of Surgery and Science, Kyushu Univ.)

- IP-8 The expressions of p53R2 in p53-negative group is related to prognosis in patients with esophageal carcinoma  
H. Okumura, S. Natsugoe, M. Matsumoto, N. Yokomakura, T. Aikou (Dept. of Surgical Oncology, Digestive Surgery, Kagoshima Univ.)
- IP-9 Chemoprevention for esophageal adenocarcinoma in rat duodeno-esophageal reflux model by selective cyclooxygenase-2 inhibitors  
T. Fujimura, K. Oyama, M. Oba, S. Sasaki, T. Miyashita, S. Kinami, I. Ninomiya, S. Fushida, G. Nishimura, T. Ohta, K. Miwa (Gastroenterologic Surgery, Dept. of Oncology, Div. of Cancer Med., Kanazawa Univ.)
- IP-10 Inhibitory effect of thioproline on esophageal carcinogenesis in a rat gastro-duodeno-esophageal reflux model  
S. Sasaki, T. Fujimura, M. Oba, T. Miyashita, S. Kinami, S. Fushida, K. Shimizu, T. Ohta, K. Miwa (Gastroenterologic Surgery, Div. of Cancer Med., Kanazawa Univ.)
- IP-11 Antitumor effect EGFR tyrosine kinase inhibitor, ZD1839 on esophageal cancer cell lines and cooperative inhibitory effect of ZD1839 in combination with 5-FU  
Y. Wada, K. Yoshida, T. Suzuki, H. Mizuiri, J. Taomoto, K. Konishi, Y. Hamai, K. Ukon, K. Tanabe, T. Toge (Dept. of surgical oncology, Research Institute for Radiation Biology and Med., Hiroshima Univ.)
- IP-12 Effect of ionizing irradiation on human esophageal cancer cell lines by cDNA microarray gene expression analysis  
H. Bo, T. Komazaki, M. Yoshino, M. Watanabe, A. Tokunaga (Institute of Gastroenterology, Nippon Medical School Second Hospital)
- IP-13 Mucin phenotypic expression in early signet ring cell carcinoma of the stomach: Its relationship with the clinicopathologic factors  
R. Aihara, Erito Mochiki, Y. Kamiyama, T. Nakabayashi, T. Asao, H. Kuwano (Gunma Univ., Dept. of General Surgical Science)
- IP-14 Keratinocyte growth factor produced by gastric fibroblasts specifically stimulates proliferation of cancer cells from scirrhous gastric carcinoma  
M. Yashiro, M. Tendo, K. Nakamura, T. Sawada, E. Ako, M. Ohira, K. Hirakawa (Dept. of Surgical Oncology, Osaka City Univ.)
- IP-15 Identification of differentially expressing proteins in human gastric carcinoma using proteome analysis  
M. Osaki<sup>1,3</sup>, R. Nishigaki<sup>2,5</sup>, T. Inoue<sup>4</sup>, S. Honjo<sup>1</sup>, T. Hiramatsu<sup>1</sup>, Y. Inoue<sup>1</sup>, T. Toda<sup>5</sup>, M. Oshimura<sup>2</sup>, H. Ito<sup>1</sup> (<sup>1</sup>Div. of Organ Pathology, <sup>2</sup>Div. of Molecular and Cell Genetics, Tottori Univ., <sup>3</sup>Institute of Regenerative Med. and Biofunction, <sup>4</sup>Dept. of Human Genome Science, Tottori Univ., <sup>5</sup>Proteomics Collaboration Research Group, Tokyo Metropolitan Institute of Gerontology)

- IP-16 Genetic alterations in 102 primary gastric cancers by comparative genomic hybridization: gain of 20q and loss of 18q are associated with tumor progression  
Y. Kimura, T. Noguchi, S. Takeno, M. Chujo, K. Kawahara (Dept. of Oncological Science, Faculty of Med., Oita Univ.)
- IP-17 Aberrant expressions of HOX genes in human gastric cancer  
T. Murai<sup>1</sup>, J. Hamada<sup>1</sup>, K. Murakawa<sup>2</sup>, M. Takada<sup>2</sup>, Y. Takahashi<sup>1</sup>, M. Tada<sup>1</sup>, M. Miyamoto<sup>2</sup>, S. Kondo, H. Kato<sup>2</sup>, T. Moriuchi<sup>1</sup> (<sup>1</sup>Div. of Cancer-Related Genes, Institute for Genetic Med., Hokkaido Univ.; Surgical Oncology, <sup>2</sup>Div. of Cancer Med., Hokkaido Univ.)
- IP-18 Caveolin-1 is specifically expressed in gastric carcinomas  
R. Ito<sup>1</sup>, N. Oue<sup>2</sup>, K. Yoshida<sup>3</sup>, K. Nakachi<sup>1</sup>, W. Yasui<sup>2</sup> (<sup>1</sup>Dept. of Radiobiology/Molecular Epidemiology, Radiation Effect Research Foundation, <sup>2</sup>Dept. of Molecular Pathology, Hiroshima Univ., <sup>3</sup>Dept. of Surgical Oncology, Research Institute for Radiation Biology)
- IP-19 Akt / PKB expression correlates with poor prognosis in gastric cancers  
D. Murakami, T. Sakamoto, S. Kanaji, S. Ohro, K. Yamaguchi, H. Saito, S. Tatebe, M. Ikeguchi, S. Tsujitani (Dept. of Surgical Oncology, Tottori Univ.)
- IP-20 The CC chemokine RANTES secreted from stromal cells promotes the progression of gastric cancer  
K. Okita, T. Furuhashi, Y. Kimura, M. Kawakami, K. Yamaguchi, T. Tsuruma, H. Zembutsu, K. Hirata (First Dept. of Surgery, Sapporo Medical Univ.)
- IP-21 Histone deacetylase inhibitors FK228, MS-275 and CBHA radiosensitize gastrointestinal adenocarcinoma cells  
Y. Zhang<sup>1,2</sup>, M. Adachi<sup>1,2</sup>, X. Zhao<sup>1,2</sup>, R. Kawamura<sup>1</sup>, K. Imai<sup>1</sup> (<sup>1</sup>First Dept. of Internal Med., <sup>2</sup>Div. of Molecular Oncology and Molecular Diagnosis, Sapporo Medical Univ.)
- IP-22 Growth inhibition of a gastric carcinoma cell line, MKN-28, by infection of recombinant adenovirus expression vector encoding human RUNX3 cDNA  
Y. Inoue<sup>1</sup>, M. Osaki<sup>1,3</sup>, S. Honjo<sup>1</sup>, T. Hiramatsu<sup>1</sup>, K. Sato<sup>2</sup>, H. Adachi<sup>1</sup>, H. Ito<sup>1</sup>  
(<sup>1</sup>Div. of Organ Pathology, <sup>2</sup>Div. of Molecular Biology, Tottori Univ., <sup>3</sup>Institution of Regenerative Med. and Biofunction, Tottori Univ.)
- IP-23 Involvement of chemokine ligand/receptor system (SDF-1a/CXCR4) in the development of peritoneal metastasis of gastric carcinoma  
<sup>1</sup>K. Yasumoto, <sup>2</sup>K. Koizumi, <sup>1</sup>I. Saiki, <sup>3</sup>O. Yoshie, <sup>1</sup>Y. Takahashi, <sup>1</sup>M. Mai  
(<sup>1</sup>Dept. Surg. Oncol., Cancer Res. Inst., Kanazawa Univ., <sup>2</sup>Div. Patho-Biochem. Inst. Natural Med. Toyama Med. Pharm. Univ., <sup>3</sup>Dept. Microbiology. Kinki Univ. Med)
- IP-24 Effect of cyclooxygenase-2 inhibitor on the invasion-stimulating activity of orthotopic fibroblast for scirrhus gastric cancer cells  
M. Tendo, M. Yashiro, K. Nakazawa, K. Nakamura, E. Ako, T. Sawada, M. Ohira, K. Hirakawa (Dept. of Surgical Oncology, Osaka City Univ.)

- IP-25 Overexpression of orotate phosphoribosyltransferase enhances the anticancer effect of 5-FU on gastric cancer cell lines  
J. Taomoto, K. Yoshida, K. Tanabe, T. Toge (Dept. of surgical oncology, Research Institute for Radiation Biology and Med., Hiroshima Univ.)
- IP-26 Cytokine balance effects on colon carcinogenesis in new rodent model of IBD  
E. Osawa, T. Dohi, A. Nakajima (Yokohama City Univ., Research Institute of International Medical Center of Japan)
- IP-27 *BRAF* mutation is associated with DNA methylation in serrated polyps and cancers of the colorectum  
T. Kambara<sup>1,2</sup>, L. Simms<sup>1</sup>, V. Whitehall<sup>1</sup>, K. Spring<sup>1</sup>, C. Wynter<sup>1</sup>, M. Walsh<sup>1</sup>, M. Barker<sup>1</sup>, S. Arnold<sup>1</sup>, A. McGivern<sup>1</sup>, N. Matsubara<sup>2</sup>, N. Tanaka<sup>2</sup>, T. Higuchi<sup>3,4</sup>, J. Young<sup>1</sup>, J. Jass<sup>4</sup>, B. Leggett<sup>1</sup> (<sup>1</sup>Conjoint Gastroenterology Laboratory, Royal Brisbane and Women's Hospital Research Foundation and Queensland Institute of Medical Research, <sup>2</sup>Dept. of Gastroenterological Surgery, Okayama Univ., <sup>3</sup>Dept. of Digestive Surgery, Tokyo Medical and Dental School, <sup>4</sup>Dept. of Pathology, McGill Univ.)
- IP-28 Inactivation of 14-3-3sigma by hypermethylation is a rare event in colorectal cancers and its expression may correlate with cell cycle maintenance at the invasion front  
M. Ide<sup>a</sup>, T. Nakajima<sup>b</sup>, T. Asao<sup>a</sup>, H. Kuwano<sup>a</sup> (Dept. of General Surgical Science<sup>a</sup>, Dept. of Tumor Pathology<sup>b</sup>, Gunma Univ.)
- IP-29 Region-specific expression of HOX genes in human colorectum and their aberrant expressions in colorectal cancer  
J. Hamada<sup>1</sup>, M. Takada<sup>2</sup>, K. Murakawa<sup>2</sup>, Y. Takahashi<sup>1</sup>, M. Tada<sup>1</sup>, M. Miyamoto<sup>2</sup>, S. Kondo<sup>2</sup>, H. Katoh<sup>2</sup>, T. Moriuchi<sup>1</sup> (<sup>1</sup>Div. of Cancer-Related Genes, Institute for Genetic Med., Hokkaido Univ.; Surgical Oncology, <sup>2</sup>Div. of Cancer Med., Hokkaido Univ.)
- IP-30 Gene expression profiling distinguishes sporadic colorectal cancers with and without microsatellite instability  
K. Koinuma<sup>1,2</sup>, Y. Yamashita<sup>1</sup>, Y. Miyakura<sup>2</sup>, H. Nagai<sup>2</sup>, H. Mano<sup>1</sup> (<sup>1</sup>Div. of Functional Genomics, <sup>2</sup>Dept. of Surgery, Jichi Medical School)
- IP-31 The role of loss of hMLH1 and microsatellite instability in sporadic colorectal carcinogenesis  
H. Noda<sup>1,3</sup>, M. Arai<sup>1</sup>, Y. Kato<sup>2</sup>, F. Konishi<sup>3</sup>, Y. Miki<sup>1</sup> (<sup>1</sup>Dept. of Molecular Diagnosis, The Cancer Institute, Japan Foundation for Cancer Research, <sup>2</sup>Dept. of Pathology, The Cancer Institute, Japan Foundation for Cancer Research, <sup>3</sup>Dept. of Surgery, Omiya Medical Center, Jichi Medical School)
- IP-32 Linoleic acid abrogates in vitro transformation of IEC6 intestinal cells by azoxymethane  
T. Sasaki, T. Sasahira, H. Kuniyasu (Dept. of Molecular Pathology, Nara Medical Univ.)
- IP-33 High concentration of deoxycholic acid abrogates in vitro transformation of IEC6 intestinal cells by azoxymethane  
H. Kuniyasu, T. Sasahira, T. Sasaki (Dept. of Molecular Pathology, Nara Medical Univ.)

- IP-34 Interleukin-15 and transforming growth factor  $\alpha$  are associated with depletion of tumor-associated macrophages in colon cancer  
H. Ohmori, T. Sasahira, H. Kuniyasu (Dept. of Molecular Pathology, Nara Medical Univ.)
- IP-35 BRAF mutation associated with dysregulation of apoptosis in human colorectal neoplasms  
N. Ikehara, S. Semba, H. Yokozaki, (Div. of Surgical Pathology, Dept. of Biomedical Informatics, Kobe Univ.)
- IP-36 Expression and localization of keratinocyte growth factor receptor (KGFR/FGFR-2IIIb) in colorectal cancer  
M. Yoshino<sup>1</sup>, T. Ishiwata<sup>2</sup>, M. Watanabe<sup>1</sup>, H. Bo<sup>1</sup>, T. Komazaki<sup>1</sup>, K. Matsumoto<sup>3</sup>, Z. Naito<sup>2</sup>, T. Shibuya<sup>1</sup>, A. Tokunaga<sup>1</sup> (<sup>1</sup>Institute of Gastroenterology, Second Hospital of Nippon Medical School <sup>2</sup>Dept. of Pathology II, Nippon Medical School <sup>3</sup>Div. of Pathology, Second Hospital of Nippon Medical School)
- IP-37 The effect of inhibiting keratinocyte growth factor family on colon cancer cells  
M. Watanabe, T. Ishiwata\*, M. Yoshino, T. Komazaki, H. Bo, T. Shibuya, A. Tokunaga (Institute of Gastroenterology, Nippon Medical School 2<sup>nd</sup> Hospital, \*Dept. of 2<sup>nd</sup> Pathology, Nippon Medical School)
- IP-38 Loss of imprinting (LOI) of insulin-like growth factor-2 (IGF-2) of background normal colorectal mucosa in patients with LOI positive cancer  
J. Sasaki <sup>1</sup>, Y. J. Kawamura <sup>1</sup>, F. Konishi <sup>1</sup>, O. Takata <sup>1</sup>, T. Tsukamoto <sup>2</sup> (<sup>1</sup>Dept. of Surgery, Omiya Medical Center, Jichi Medical School, <sup>2</sup>School of Pharmaceutical Sciences, Kitasato Univ.)
- IP-39 Splicing variants of hdm2 protooncogene and inactivation of p53 tumor suppressor gene in colorectal cancer  
B. Zhang, Z. W. Yu, K. Yamashita, A. Shakoori, A. Ougolkov, Y. Takahashi, T. Minamoto (Div. of Diagnostic Molecular Oncology and Surgical Oncology, Cancer Research Institute, Kanazawa Univ.)
- IP-40 Gene expression profiling of colorectal cancer using clinical cDNA filter array  
S. Yoshioka<sup>1</sup>, I. Takemasa<sup>1</sup>, S. Nakamori<sup>1</sup>, N. Nishimura<sup>2</sup>, M. Sekimoto<sup>1</sup>, M. Monden<sup>1</sup> (<sup>1</sup>Dept. of Surgery and Clinical Oncology, Osaka Univ., <sup>2</sup>Genetic Lab Co., Ltd.)
- IP-41 An analysis of lymph node metastasis of colorectal cancer by using cDNA array  
T. Nakamura<sup>1</sup>, O. Takata<sup>1</sup>, Y. J. Kawamura<sup>1</sup>, T. Kai<sup>1</sup>, F. Konishi<sup>1</sup>, H. Nagai<sup>2</sup>, T. Tsukamoto<sup>3</sup> (<sup>1</sup>Dept. of Surgery, Omiya Medical Center, Jichi Medical School, <sup>2</sup>Dept. of Surgery, Jichi Medical School, <sup>3</sup>Div. of Biological Chemistry, Kitasato Univ.)
- IP-42 The protocadherin LKC expression as a differentiation marker in hepatoma cell line  
H. Ota<sup>1</sup>, H. Nagano<sup>1</sup>, M. Sakon<sup>1</sup>, D. Bazarragchaa<sup>1</sup>, M. Nakamura<sup>1</sup>, H. Wada<sup>1</sup>, S. Yoshioka<sup>1</sup>, S. Marubashi<sup>1</sup>, A. Miyamoto<sup>1</sup>, K. Dono<sup>1</sup>, K. Umeshita<sup>1</sup>, K. Wakasa<sup>2</sup>, S. Nakamori<sup>1</sup>, M. Monden<sup>1</sup> (<sup>1</sup>Dept. of Surgery and Clinical Oncology, Osaka Univ., <sup>2</sup>Dept. of Pathology, Osaka City Univ.)

- IP-43 Expression of Id proteins in human hepatocellular carcinoma: Relevance to hepatocarcinogenesis and tumor dedifferentiation  
B. Damdinsuren, H. Nagano, M. Kondo, H. Yamamoto, T. Yamamoto, H. Ota, M. Nakamura, H. Wada, S. Marubashi, A. Miyamoto, K. Umeshita, K. Dono, S. Nakamori, M. Sakon, M. Monden (Dept. of Surgery and Clinical Oncology, Osaka Univ.)
- IP-44 The clinically used copper-chelating agent, trientine, attenuates liver carcinogenesis via angiogenesis suppression  
J. Yoshii<sup>1</sup>, H. Yoshiji<sup>1</sup>, S. Kuriyama<sup>2</sup>, Y. Ikenaka<sup>1</sup>, R. Noguchi<sup>1</sup>, K. Yanase<sup>1</sup>, T. Namisaki<sup>1</sup>, M. Kitade<sup>1</sup>, H. Fukui<sup>1</sup> (<sup>1</sup>Third Dept. of Internal Med., Nara Medical Univ., <sup>2</sup>Third Dept. of Internal Med., Kagawa Univ.)
- IP-45 Hepatic extracellular matrix remodeling plays an important role in liver carcinogenesis  
Y. Ikenaka<sup>1</sup>, H. Yoshiji<sup>1</sup>, S. Kuriyama<sup>2</sup>, J. Yoshii<sup>1</sup>, R. Noguchi<sup>1</sup>, K. Yanase<sup>1</sup>, T. Namisaki<sup>1</sup>, M. Kitade<sup>1</sup>, H. Fukui<sup>1</sup> (<sup>1</sup>Third Dept. of Internal Med., Nara Medical Univ., <sup>2</sup>Third Dept. of Internal Med., Kagawa Univ.)
- IP-46 The potent angiogenic factor, vascular endothelial growth factor, and receptor interaction plays a pivotal role in liver carcinogenesis  
M. Kitade<sup>1</sup>, H. Yoshiji<sup>1</sup>, S. Kuriyama<sup>2</sup>, J. Yoshii<sup>1</sup>, Y. Ikenaka<sup>1</sup>, R. Noguchi<sup>1</sup>, K. Yanase<sup>1</sup>, T. Namisaki<sup>1</sup>, H. Fukui<sup>1</sup> (<sup>1</sup>Third Dept. of Internal Med., Nara Medical Univ., <sup>2</sup>Third Dept. of Internal Med., Kagawa Univ.)
- IP-47 In vivo prevention of metastases by pegylated liposomal doxorubicin in a metastatic tumor model  
J. Ma, A. Li (Dept. of Central Laboratory, Cancer Institute, Chinese Academy of Med., Beijing, China)
- IP-48 Suppression of N-nitrosobis (2-oxopropyl) amine (BOP)-induced biliary carcinogenesis in bilioenterostomized hamsters by TJ-41  
N. Tsuneoka, Y. Tajima, K. Fukuda, T. Kitajima, T. Kuroki, M. Haraguchi, J. Furui, T. Kanematsu (Nagasaki Univ., Dept. of Surgery, Goto Central Hospital, Nagasaki)
- IP-49 Detection of *Helicobacter* DNAs in the biliary system in patients with pancreaticobiliary maljunction: A new aspect of developing biliary carcinoma  
K. Fukuda, Y. Tajima, T. Adachi, R. Tsutsumi, T. Kuroki, Y. Ohno, T. Kanematsu (Dept. of Transplantation and Digestive Surgery, Nagasaki Univ.)
- IP-50 Different expression of cyclooxygenase-2 in biliary epithelia of bile duct cancer with or without pancreaticobiliary maljunction  
K. Yoshimatsu<sup>1</sup>, O. Watanabe<sup>1</sup>, S. Shiozawa<sup>1</sup>, A. Tsuchiya<sup>1</sup>, D. H. Kim<sup>1</sup>, M. Aiba<sup>2</sup>, K. Ogawa<sup>1</sup> (Dept. of <sup>1</sup>Surgery and <sup>2</sup>Surgical Pathology, Tokyo Women's Medical Univ. Daini Hospital)
- IP-51 A role of protease activated receptor 2 (PAR-2) in pancreatic cancer cell proliferation  
M. Inoue, T. Sawada, R. Shimamoto, M. Yashiro, M. Tendo, K. Nakamura, A. Mino, Y. Uchima, K. Kimura, M. Ohira, K. Hirakawa (Dept. of Surgical Oncology, Osaka City Univ.)



- IP-52 Expression of osteopontin in human pancreatic cancer cell lines has a high correlation with liver metastasis  
K. Ohno<sup>1,3</sup>, H. Nishimori<sup>1</sup>, F. Hata<sup>1</sup>, T. Yasoshima<sup>3</sup>, R. Fukui<sup>1</sup>, Y. Yanai<sup>1,3</sup>, K. Kamiguchi<sup>2</sup>, R. Denno<sup>1</sup>, N. Sato<sup>2</sup>, K. Hirata<sup>1</sup> (Dept. of Surgery <sup>1</sup>, Dept. of Pathology <sup>2</sup>, Sapporo Medical Univ., Shinsapporo Keiaiikai Hospital<sup>3</sup>)
- IP-53 Tumor-derived trypsin enhances the growth and invasion of human pancreatic cancer cells through PAR-2 activation  
T. Ohta, H. Tajima, H. Kitagawa, M. Kayahara, T. Fujimura, G. Nishimura, K. Shimizu, K. Miwa (Dept. of Surgical Oncology, Kanazawa Univ.)
- IP-54 Intraductal papillary mucinous carcinoma of the pancreas in pancreaticobiliary maljunction - experimental study on pancreatic carcinogenesis using a hamster model  
T. Adachi, Y. Tajima, A. Kitazato, K. Fukuda, R. Tsutsumi, T. Kuroki, T. Kanematsu (Dept. of Transplantation and Digestive Surgery, Nagasaki Univ.)
- IP-55 Reexpression of reduced VEGF activity in liver metastasis of experimental pancreatic cancer  
E. Uchida, M. Fukuhara, K. Yanagi, A. Matsushita, T. Aimoto, Y. Nakamura, A. Katsuno, K. Chou, S. Yokomuro, T. Tajiri (Dept. of Surgery I, Nippon Medical School)

August 20 Friday Meeting Room “ Highness Hall ”

- 9:00-11:00      **Symposium 3 “ Inflammation and Carcinogenesis ”**  
Chairpersons: B. I. Carr (University of Pittsburgh, Pittsburgh, USA)  
K. Hirata (Sapporo Medical University, Sapporo, Japan)  
\*Sponsored by Chugai Pharmaceutical Co., Ltd.
- IS3-1      Chronic pancreatitis – pancreatic cancer: is there a molecular sequence?  
H. G. Beger<sup>1,2</sup>, F. Gansauge<sup>1,2</sup>, S. Gansauge<sup>1,2</sup>, M. Ramadani, C. Beger<sup>3</sup> (<sup>1</sup>Dept. of General Surgery, Univ. of Ulm, <sup>2</sup>Dept. of Visceral Surgery, Illertalklinik, Illertissen, <sup>3</sup>Dept. of Cellular and Molecular Pathology, Medical School, Hannover, Germany)
- IS3-2      The molecular signature of metastases of human hepatocellular carcinoma  
X. W. Wang<sup>1</sup>, A. Budhu<sup>1</sup>, B. Zipser<sup>1</sup>, M. Forgues<sup>1</sup>, Y. Chen<sup>2</sup>, Q. Ye<sup>3</sup>, L.-X. Qin<sup>3</sup>, Z.-Y. Tang<sup>3</sup>, R. Simon<sup>4</sup>, Z. Sun<sup>5</sup> (<sup>1</sup>Liver Carcinogenesis Group, LHC, CCR, NCI; <sup>2</sup>CGB, NHGRI, <sup>4</sup>BRB, NCI, NIH, Bethesda, USA, <sup>3</sup>Liver Cancer Institute, Fudan Univ., Shanghai, <sup>5</sup>National Laboratory of Molecular Oncology, Cancer Institute, CAMS, Beijing, China)
- IS3-3      Biliary tract malignancy and chronic inflammation; from the perspective of pancreaticobiliary malunion  
Y. Kimura, K. Hirata, N. Nishikawa, K. Okita, T. Furuhata, T. Mizuguchi, T. Nobuoka, H. Nishimori, H. Zenbutsu, M. Satoh\*, T. Katsuramaki (First Dept. of Surgery, \*Dept. of Clinical Pathology, Sapporo Medical Univ., Sapporo, Japan)
- IS3-4      Inflammation and carcinogenesis  
R. H. Riddell (Mount Sinai Hospital, Toronto, Canada)
- IS3-5      Persistent inflammation and cancer development in gastrointestinal and hepatocellular carcinomas  
F. Itoh<sup>1</sup>, M. Suzuki<sup>1</sup>, M. Toyota<sup>2</sup>, K. Imai<sup>2</sup> (<sup>1</sup>Div. of Gastroenterology and Hepatology, St. Marianna Univ. School of Medicine, <sup>2</sup>The First Dept. of Internal Med., Sapporo Medical Univ., Japan)
- 11:00-11:45      **Invited Lecture**  
Chairperson: K. Sugimachi (Kyushu University, Fukuoka, Japan)
- IL      Radical causes of human cancer  
C. C. Harris, S. P. Hussain, L. J. Hofseth, G. Wogan, X. W. Wang (National Cancer Institute, NIH, Bethesda, USA)
- 13:30-14:40      **Free papers 3 “ Diagnosis & Prognostic Factor ”**  
Chairpersons: R. Riddell (Mount Sinai Hospital, Toronto, Canada)  
Y. Maehara (Kyushu University, Fukuoka, Japan)
- IO-13      Biological diagnosis for lymph node metastasis, including micrometastasis in superficial esophageal cancer  
S. Natsugoe, M. Matsumoto, H. Okumura, T. Setoyama, Y. Uchikado, H. Arima, N. Yokomakura, H. Takatori, S. Ishigami, T. Owaki, T. Aikou (Dept. of Surgical Oncology and Digestive Surgery, Kagoshima Univ.)

- IO-14 Prognostic score of gastric cancer determined by cDNA microarray  
H. Inoue, A. Matsuyama, K. Mimori, T. Utsunomiya, M. Mori (Dept. of Surgery, Medical Institute of Bioregulation, Kyushu Univ.)
- IO-15 LOH of PTEN in gastric cancer: association with tumor progression and prognosis  
E. Oki<sup>1</sup>, E. Tokunaga<sup>1</sup>, M. Futatsugi<sup>1</sup>, N. Ueda<sup>1</sup>, S. Ushiro<sup>1</sup>, M. Yamamoto<sup>1</sup>, M. Watanabe<sup>1</sup>, M. Ikebe<sup>1</sup>, Y. Kakeji<sup>2</sup>, H. Baba<sup>1</sup>, Y. Maehara<sup>1</sup> (<sup>1</sup>Dept. of Surgery and Science, Kyushu Univ., <sup>2</sup>Center for the Integration of Advanced Med. and Innovative Technology, Kyushu Univ. Hospital)
- IO-16 Comparison of peritoneal metastasis between gastric cancer and colorectal cancer: Clinical and experimental studies  
H. Nakanishi<sup>1</sup>, Y. Kodera<sup>3</sup>, S. Ito<sup>2</sup>, Y. Yamamura<sup>2</sup>, Q. Jun<sup>2</sup>, T. Hara<sup>2</sup>, T. Hirai<sup>2</sup>, T. Kato<sup>2</sup>, M. Tatematsu<sup>1</sup> (<sup>1</sup>Div. of Oncological Pathology, Aichi Cancer Center Res. Inst, <sup>2</sup>Dept. of Gastroenterol. Surg., Aichi Cancer Center Hospital <sup>3</sup>Dept. of Surg. II, Nagoya Univ. Med)
- IO-17 Expression of RCAS1 and cadherin-family in relation to tumor progression and survival in patients with colorectal carcinoma  
S. Tsujitani, T. Honboh, S. Oka, K. Fukuda (Dept. of Surgery, Div. of Surgical Oncology, Tottori Univ.)
- IO-18 The analysis of gene expression of colon carcinoma for prediction of hepatic metastasis by using cDNA array  
O. Takata<sup>1</sup>, Y. J. Kawamura<sup>1</sup>, F. Konishi<sup>1</sup>, J. Sasaki<sup>1</sup>, T. Kai<sup>1</sup>, Y. Miyakura<sup>2</sup>, H. Nagai<sup>2</sup>, T. Tsukamoto<sup>3</sup> ( <sup>1</sup> Dept. of Surgery, Omiya Medical Center, Jichi Medical School, <sup>2</sup> Dept. of Surgery, Jichi Medical School, <sup>3</sup> Div. of Biological Chemistry, School of Pharmaceutical Sciences, Kitasato Univ.)
- IO-19 Immunohistochemical analysis of cell proliferation-associated molecules in hepatocellular carcinoma tissues  
N. Matsuura<sup>1</sup>, Y. Ito<sup>2</sup>, M. Monden<sup>3</sup> (<sup>1</sup>Dept. of Molecular Pathology and <sup>3</sup>Surgery, Osaka Univ., <sup>2</sup>Dept. of Surgery, Kuma Hospital)

14 : 40-15 : 40 Free papers 4 “ Molecular Study ”

Chairpersons: H. Nakagawa (University of Pennsylvania, Philadelphia, USA)  
H. Itoh (Tottori University, Yonago, Japan)

- IO-20 Increase of nuclear area of cancer cells in gastrointestinal tract estimated by image analysis using confocal endomicroscopy system  
Y. Kakeji<sup>1</sup>, S. Ieiri<sup>1</sup>, K. Konishi<sup>2</sup>, T. Yasunaga<sup>3</sup>, E. Oki<sup>4</sup>, M. Yamamoto<sup>4</sup>, H. Kawanaka<sup>4</sup>, M. Ikebe<sup>4</sup>, K. Tanoue<sup>2</sup>, H. Baba<sup>4</sup>, Y. Maehara<sup>4</sup>, M. Hashizume<sup>1,3</sup> (<sup>1</sup>Center for Integration of Advanced Med. and Innovative Technology, <sup>2</sup>Dept. of Innovative Medical Technology, <sup>3</sup>Dept. of Disaster and Emergency Med., <sup>4</sup>Dept. of Surgery and Science, Kyushu Univ.)

- IO-21 Metastasis-associated protein MTA1: Its relationship to histone deacetylation, signal transduction and angiogenesis  
Y. Toh, T. Ohga, S. Itoh, S. Tanaka, E. Adachi, M. Haraguchi, T. Okamura, G. L. Nicolson\*  
(Dept. of Gastroenterological Surgery, National Kyushu Cancer Center, \*The Institute for Molecular Med., Huntington Beach)
- IO-22 Insulin-like growth factor binding protein-3, a novel EGFR downstream target molecule, may serve as a senescence checkpoint through a p53-dependent mechanism during esophageal carcinogenesis  
H. Nakagawa<sup>1,2,3</sup>, M. Takaoka<sup>1,2,3</sup>, C. Andl<sup>1,2,3</sup>, K. Oyama<sup>1,2,3</sup>, H. Harada<sup>1,2,3</sup>  
(<sup>1</sup>Gastroenterology Div., <sup>2</sup>Dept.s of Med., <sup>3</sup>Abramson Cancer Center, Univ. of Pennsylvania)
- IO-23 Search for novel genes of gastric cancer through serial analysis of gene expression  
P. P. Aung\*, N. Oue, Y. Mitani, H. Nakayama, W. Yasui (Dept. of Molecular Pathology, Hiroshima Univ.)
- IO-24 Analysis of the TGF- $\beta$  signal in Smad4-knocked down pancreatic cancer cells  
J. Amarsanaa, H. Ijichi, T. Imamura, B. Guleng, M. Ohta, Y. Tanaka, J. Imamura, Y. Asaoka, T. Ikenoue, K. Tateishi, T. Kawakami, F. Kanai, M. Omata (Dept. of Gastroenterology, Univ. of Tokyo)
- IO-25 Unrestrained activation of glycogen synthase kinase 3 (GSK3) in colorectal cancer  
A. Shakoori, A. Ougolkov, B. Zhang, Z. W. Yu, K. Yamashita, Y. Takahashi, T. Minamoto  
(Div. of Diagnostic Molecular Oncology and Surgical Oncology, Cancer Research Institute, Kanazawa Univ.)

15 : 40-15 : 45      **Closing Remarks**  
M. Kaminishi